

**FOR LEASE:
OFFICE SPACE**

VAST COMMERCIAL

REAL ESTATE SOLUTIONS

NOW LEASING:

**1630 EAST
RIVER ROAD**

\$14,000/MO



PROPERTY OVERVIEW

Vast Commercial is pleased to offer space for lease in Mesquite Corporate Center, a highly visible, multi-tenant office park with frontage along River Road. This prime Foothills location is just west of Campbell Avenue, within walking distance of the restaurants and professional services at Joesler Village and St. Philip's Plaza. This 10,500 SF space consists of two floors of sophisticated, modern office condos and features interior and exterior stairwells, an elevator, (2) restrooms within the suite, (4) common area restrooms, and well-maintained and attractive landscaping. Covered parking is available.

PROPERTY HIGHLIGHTS



Premier Class A
Property



Office Space



Prime Foothills
Location



10,500 SF

JON O'SHEA

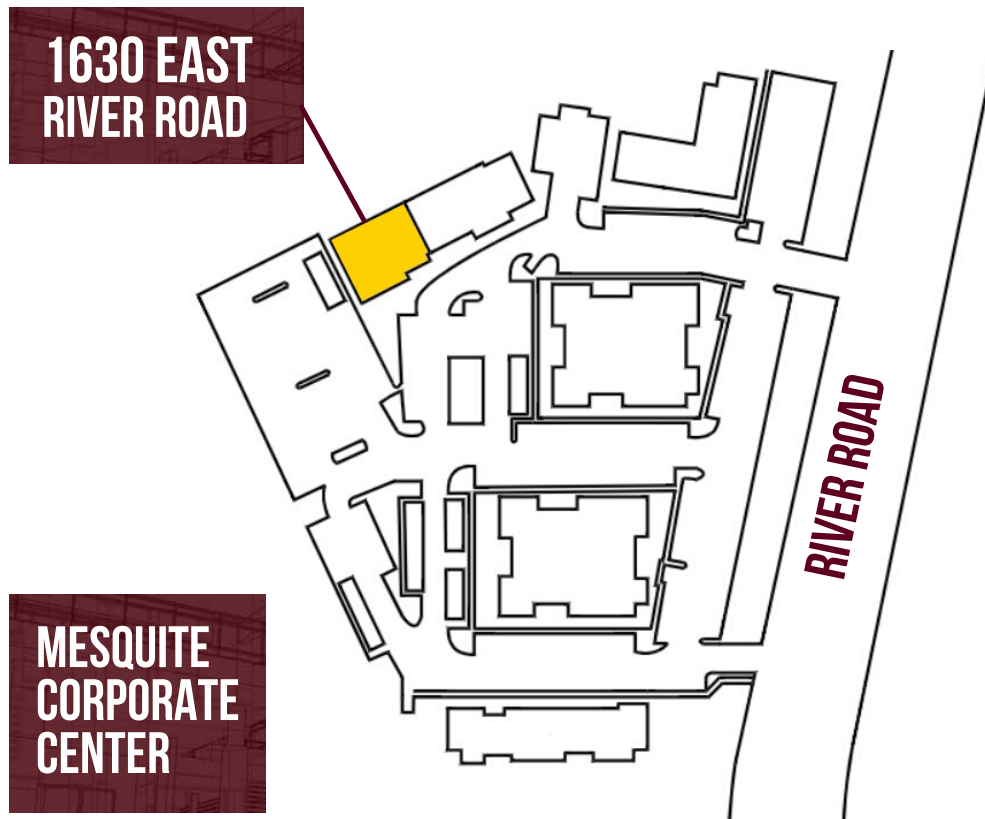
JON@VASTTUCSON.COM
www.vasttucson.com/lease/1630

(520) 624-9400

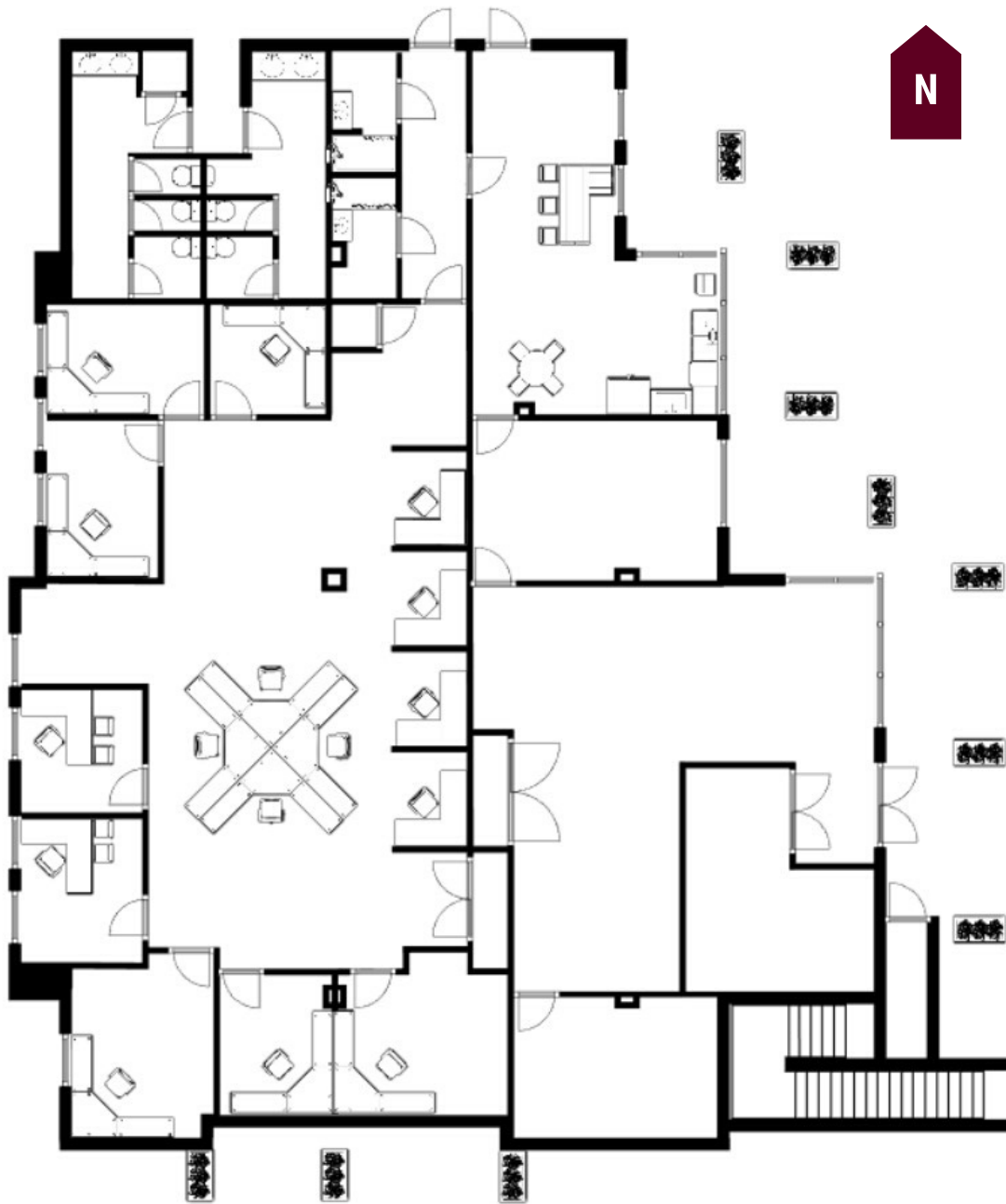
PROPERTY DETAILS

1630 East River Road Mesquite Corporate Center	
Floors	2
Total Square Feet:	10,500
Lease Type:	NNN
Lease Rate (Monthly):	\$14,000
Lease Rate (SF/Year):	\$16.00

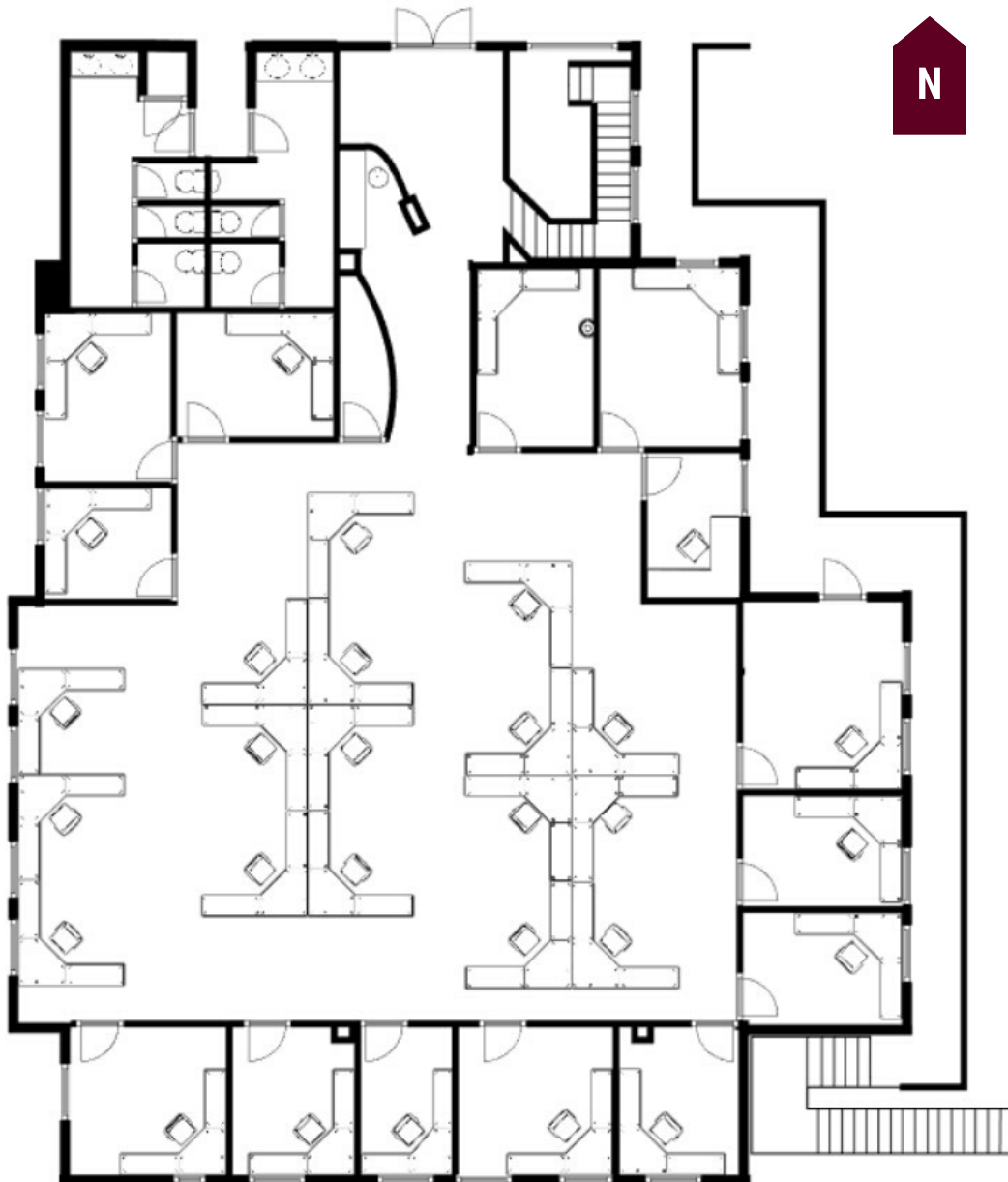
SITE PLAN



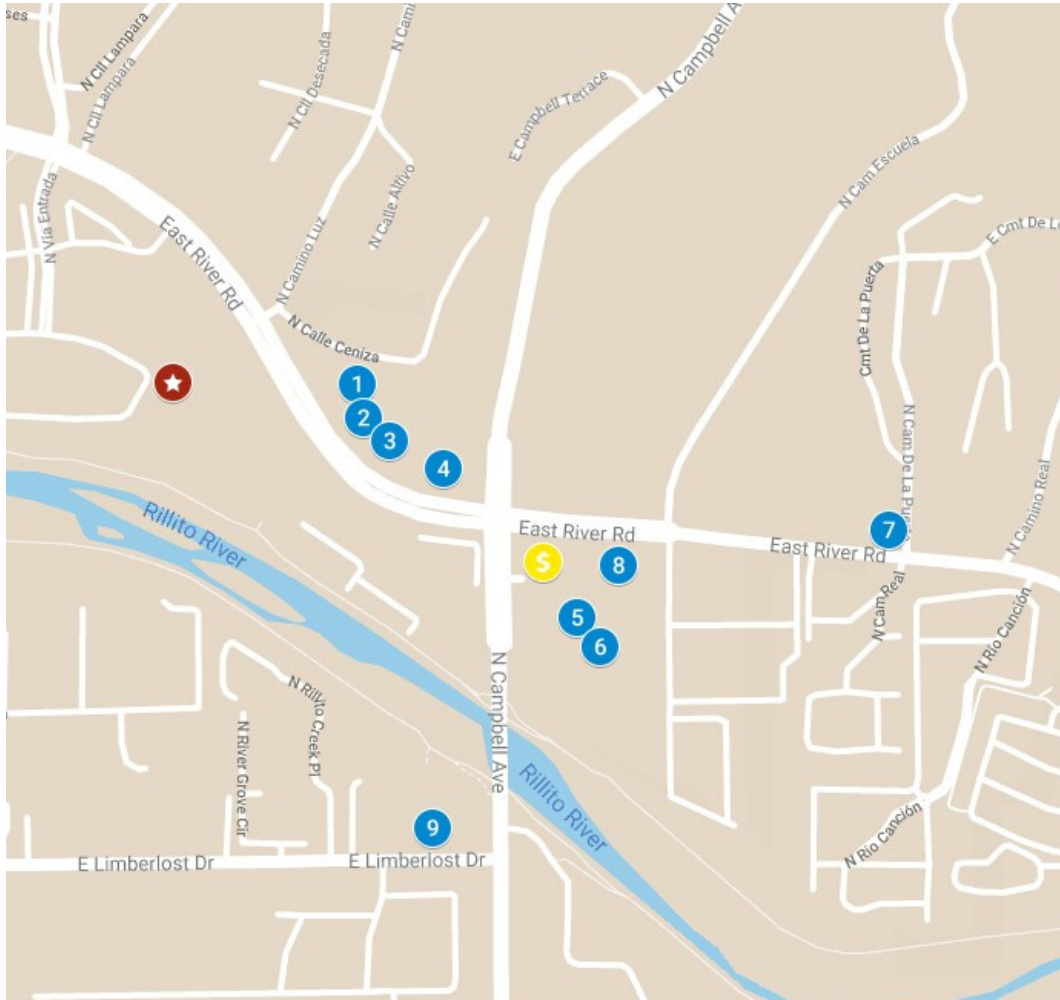
FLOOR 1



FLOOR 2



AMENITIES MAP



★ 1630 East River Road

AMENITIES

- 1 Seis Kitchen
- 2 Sullivan's Steakhouse
- 3 P.F. Chang's
- 4 Zinburger

- 5 Union Public House
- 6 Reforma Modern Mexican
- 7 El Corral
- 8 Gadabout SalonSpas
- 9 Trader Joe's
- 💰 Chase Bank